

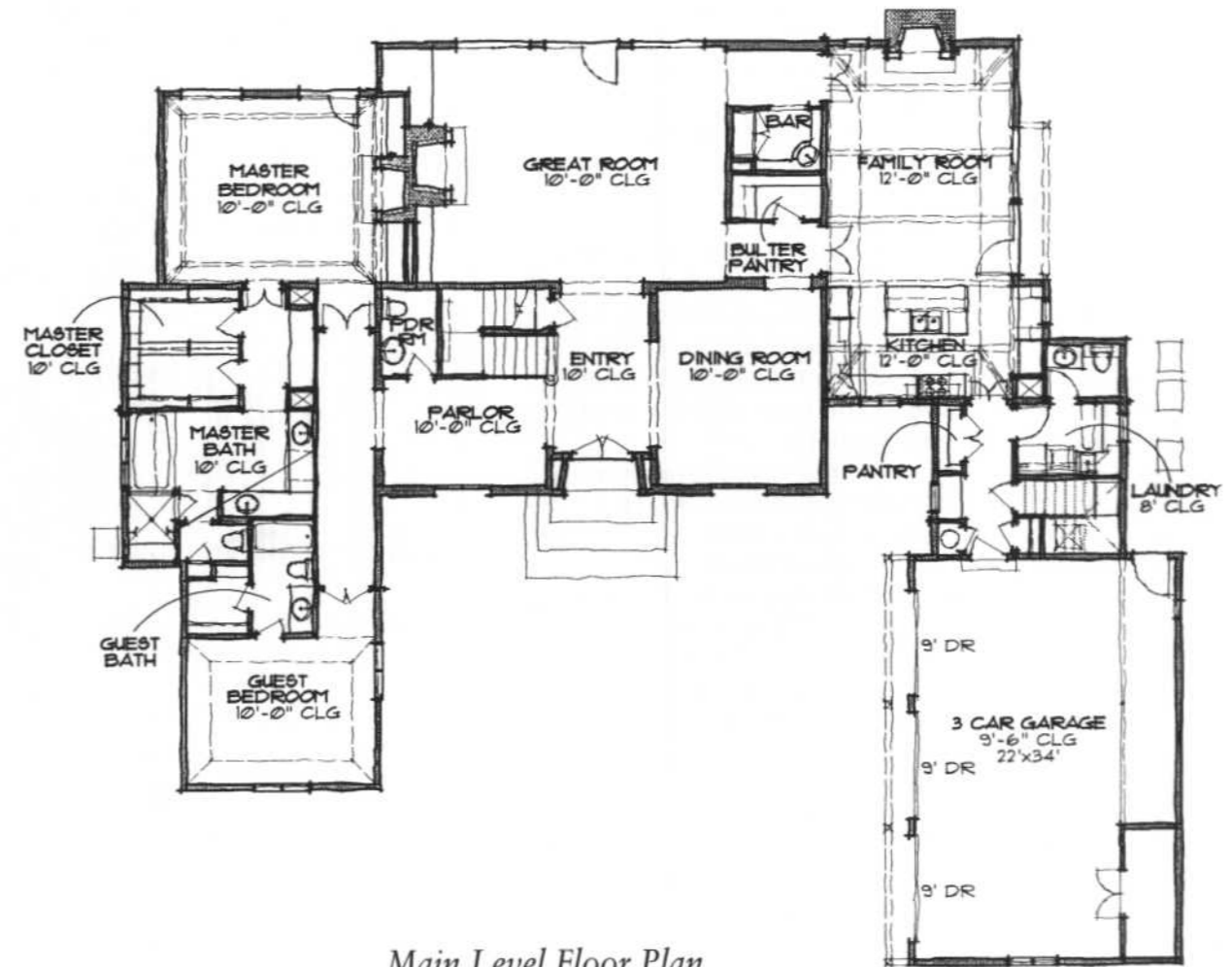
This Beaujolais model takes its inspiration from an authentic French home. The high pitched roof, a cast stone entry and stucco facade create an elegant home in the best of French traditions. A motor court in the front adds to the European look.

Quite similar in design to the Beaujolais 4604, this plan is reversed and reduced in scale. Yet, the spaces within are still open and expansive, providing a good transition from the master bedroom wing to the combined family room/kitchen area.

Adjacent to the laundry, a small storage room is indicated, but it could easily be converted to a stairwell for access to an extra room above the three car garage.

Possibilities:

1. Add an additional room over the garage.
2. Convert the guest room to a study or office.
3. Eliminate the guest room to save square footage.
4. Combine the two upstairs bathrooms into one large bathroom suite.
5. Add an additional wing behind the garage for a guest room, playroom or cabana.
6. Expand the master bathroom and closet outward to include additional storage space.



Main Level Floor Plan

3400 S.F. (Main Level)
4226 S.F. Total

MAIN LEVEL
Entry 8'-0" x 14'-0"
Living Room 20'-0" x 24'-0"
Dining Room 13'-8" x 16'-6"
Kitchen/Family Room 16'-0" x 30'-0"
Sitting Area 9'-0" x 13'-6"
Master Bedroom 16'-0" x 18'-6"
Guest Room 12'-6" x 16'-0"

UPPER LEVEL
Bedroom (#2) 13'-0" x 14'-6"
Bedroom (#3) 15'-0" x 17'-6"
Extra Room 12'-0" x 19'-0"

OVERALL
89'-6" x 78'-4"