

# SUSSEX

3450

From the exterior, this version of Sussex looks small, as if it were inspired by one of those charming thatched-roof cottages that used to dot the French countryside. But inside, the interior is remarkably open, having all the room and fine features a contemporary family could ever want.

The entry is separate, with a vaulted ceiling trimmed with crossed timbers. It opens to the great room, which truly lives up to its name. It is 40' long, and provides all the entertaining space most families would ever need. Exposed timbers on the lengthwise ceiling vault, an imposing fireplace, and easy access to an elegant powder room are important features of this magnificent setting.

Spaciousness marks the combined kitchen and family room. Yet there is coziness, made possible by the stone fireplace and timbered ceiling. The cook is afforded a generous pantry, two separate food preparation areas, and a nearby wine closet that is a pleasant addition to this design.

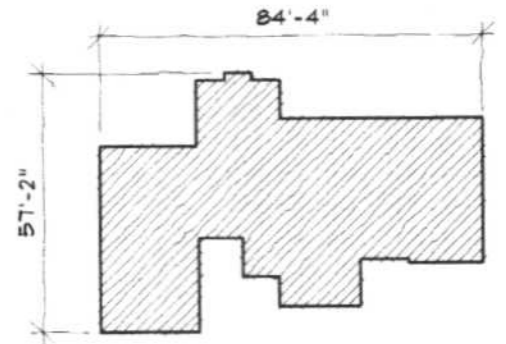
While the major living spaces ~ the kitchen and family room and great room ~ are designed especially for entertaining large groups, the master suite invites privacy, a space for quiet contemplation and relaxation. Reached through a small gallery that affords views of nature, the bedroom is sumptuous. It has a 17' vaulted ceiling outlined with timbers. A small, beautiful fireplace makes for a cozy winter evening. Amenities abound in the bath, and the closets have all the trademarks of the architect's designs ~ a center island, recessed shelf lighting, and elegant crown moldings.

While parents relax, children have their own space upstairs ~ two large bedrooms, ample storage area that could convert to a study or game room, and more closets than they ever dreamed of filling.

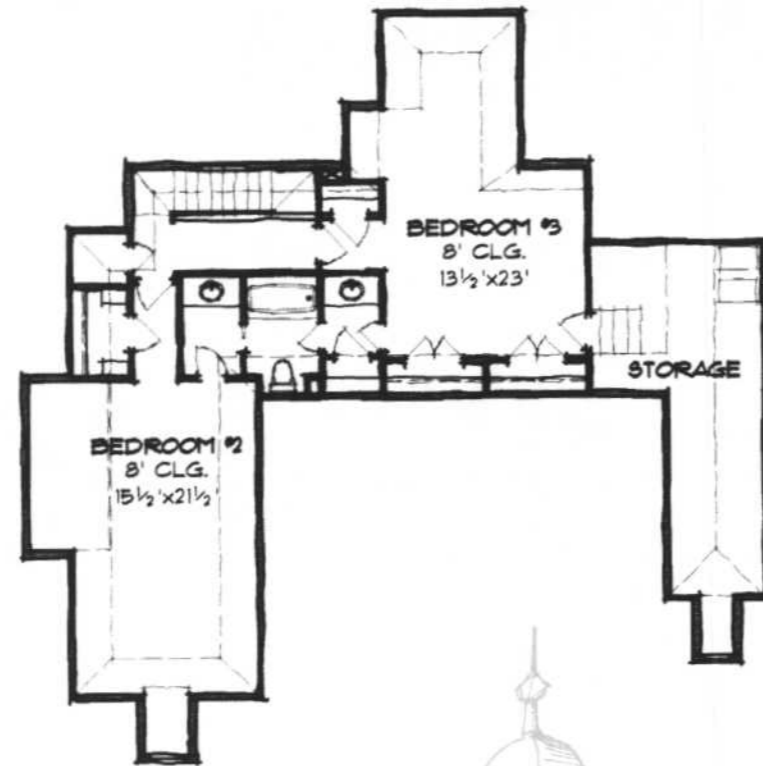
A spacious three-car garage includes the utility area and gives easy and functional access to the family room and kitchen.



Please note:  
In an effort to continually upgrade and/or improve our plans, Homes of Elegance reserves the right to make alterations to this plan.

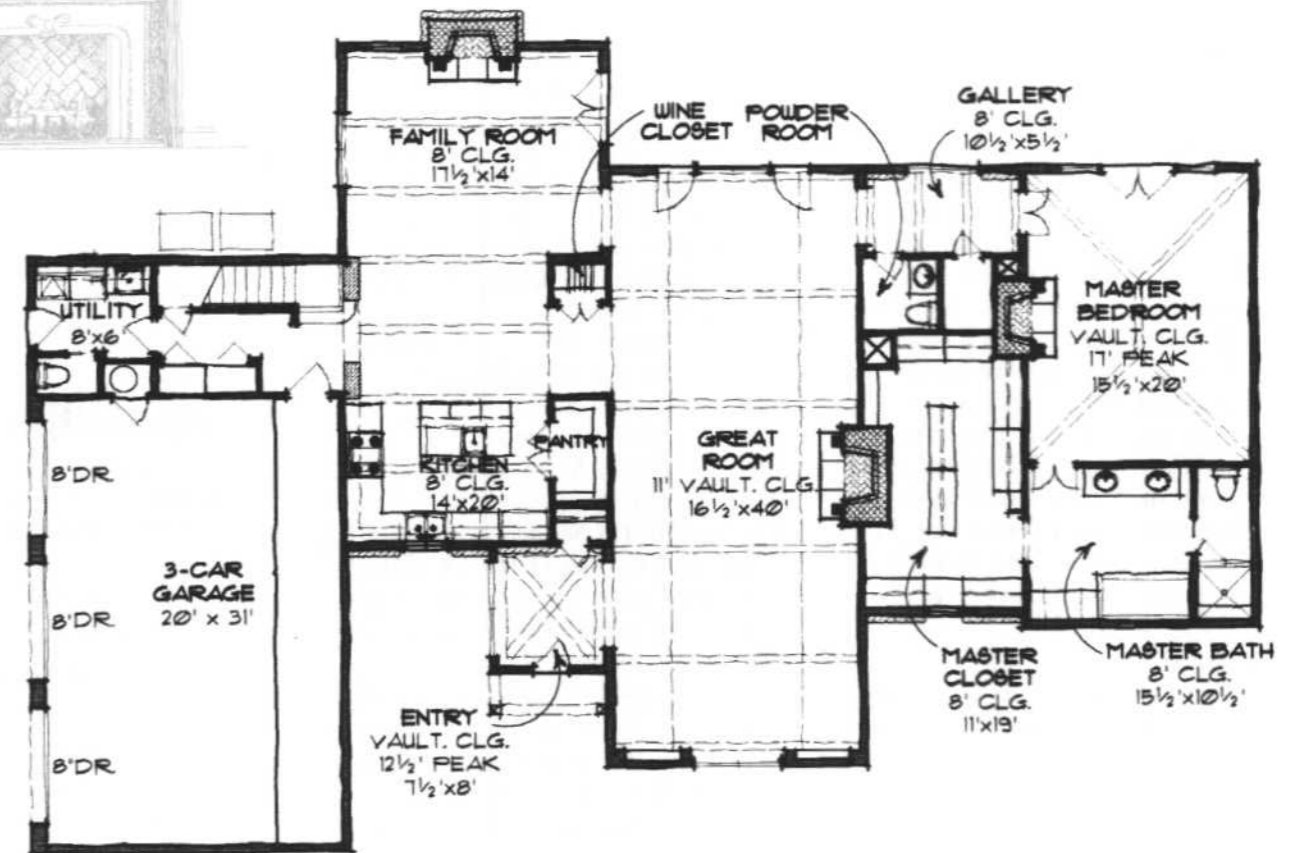


Dimensions over wood frame  
(Does not include any veneer)



Upper Level Floor Plan

947 S.F. (Upper Level)



Main Level Floor Plan

2503 S.F. (Main Level)

3450 S.F. Total

